



QUICK START GUIDE FOR LUCAM CAPTURE SOFTWARE

This reference guide will help you quickly set up your camera and efficiently capture images.

PART I: INSTALL SOFTWARE & START PREVIEW

1. LAUNCH LUCAM CAPTURE APPLICATION

Install “LuCam Software” onto your computer. Once the install is complete, launch the “LuCam Capture” application from the Windows Start menu.

The latest LuCam Software is available online:
www.lumenera.com/support/downloads/industrial-downloads.php

2. START PREVIEW & SELECT PREVIEW IMAGE SIZE

Before clicking on the **Start Preview** button, select the desired image size (Figure 1) and desired framerate (Figure 2) from the dropdown list:

Figure 1:

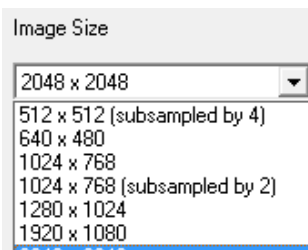
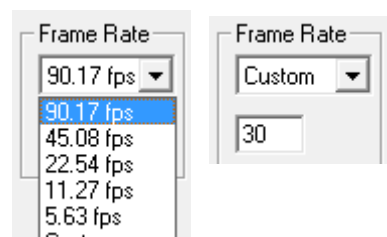


Figure 2:

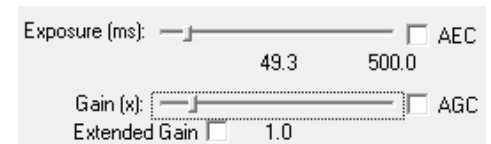


Select or set custom framerate.
 Not for all camera models.

PART II: ADJUST PREVIEW BRIGHTNESS & COLOR

3. PREVIEW BRIGHTNESS

With *Gain* set to 1, adjust the exposure slider until your image has the appropriate brightness level. If needed, increase the gain. Tip: Higher gain will increase the image digital noise.



If you prefer, choose *Continuous Auto Exposure* (AEC shown in Figure 3) or *Continuous Auto Gain Control* (AGC shown in Figure 4) to have the camera automatically adjust to variable lighting conditions. Note: Some camera models do not support AEC or AGC.

Figure 3:

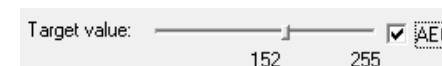
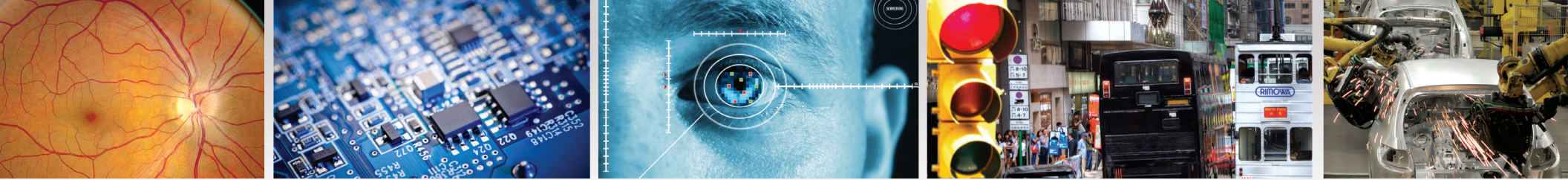


Figure 4:



4. PREVIEW COLOUR - WHITE BALANCE

Click the *White Balance* button **WB** to perform a white balance. You may also perform *Continuous Auto White Balance* by checking the **AWB** option.



QUICK START GUIDE FOR LUCAM CAPTURE SOFTWARE

PART III: IMAGE CAPTURE

5. CAPTURE AND SAVE IMAGES

To capture an image from *Preview*, click the  button.

Click the  button to save the captured image.

PART IV: RESOURCES

USB CAMERA USER MANUAL

The USB camera user manual is stored on your computer in the following folder: ..\Lumenera Corporation\LuCam Capture Software\Documentation

SOFTWARE UPGRADES

Software upgrades are available at no cost to current Lumenera customers. The newest version of LuCam Capture Software is available for download on the Lumenera website at: www.lumenera.com/support/downloads/industrial-downloads.php

FLASH TUTORIALS

Flash tutorials are available on the support/download section of the Lumenera website at: www.lumenera.com/support/Industrial/training.php

LuCam Capture Overview Tutorial: Quickly familiarize yourself with the basic features and layout of this application, including:

- Region of Interest
- Initial exposure & gain adjustments
- Image capture
- DirectX property pages

TECHNICAL ASSISTANCE CENTER (TAC)

The Technical Assistance Center (TAC) offers full technical support for all Lumenera cameras.

Hours of operation 9 am to 5:30 pm EST, Monday to Friday
E-mail support@lumenera.com or phone 1 (613) 736-4077 x 2

